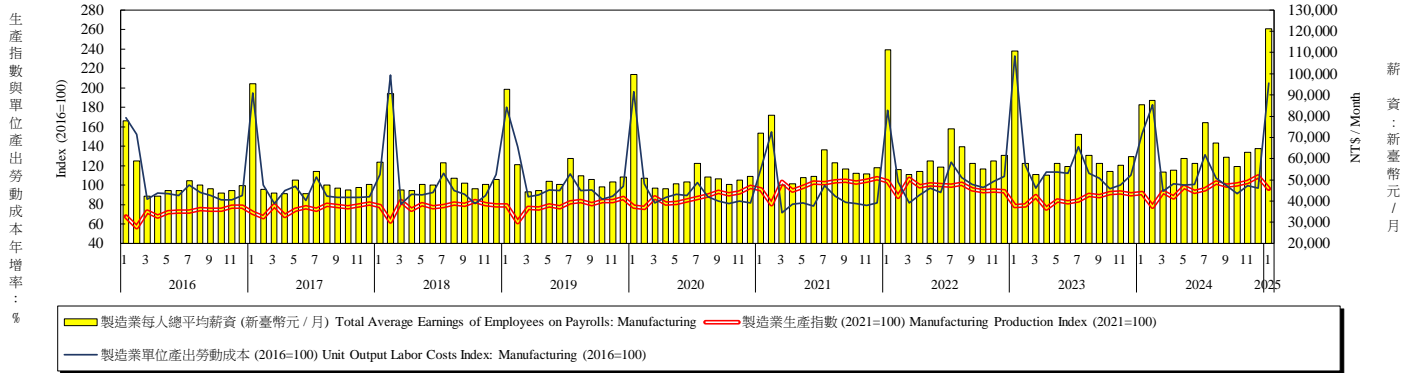


表三：生產概況
Table 3. Industry Indicators



年與月 Year & Month	製造業生產 (2021年=100) Manufacturing Production Index (2021=100)		金屬機電工業 (2021年=100) Metal Electromechanical Industry (2021=100)		資訊電子工業 (2021年=100) Information electronics industry (2021=100)		化學工業 (2021年=100) Chemical industry (2021=100)		民生工業 (2021年=100) Livelihood Industry (2021=100)		製造業單位產出勞動成本 (2021年=100) Unit Output Labor Costs Index: Manufacturing (2021=100)		製造業每人總平均薪資 (新臺幣/月) Total Average Earnings of Employees on Payrolls: Manufacturing		
	指數 Index	年增率 Annual Growth Rate (%)	指數 Index	年增率 Annual Growth Rate (%)	指數 Index	年增率 Annual Growth Rate (%)	指數 Index	年增率 Annual Growth Rate (%)	指數 Index	年增率 Annual Growth Rate (%)	指數 Index	年增率 Annual Growth Rate (%)	新臺幣元 NT\$/ Month	年增率 Annual Growth Rate (%)	
2010	60.62	29.17	73.77	30.89	43.94	40.92	90.52	9.43	86.42	15.44	101.72	-12.18	43,152	9.18	
2011	62.11	2.46	77.93	5.64	45.64	3.87	86.57	-4.36	88.95	2.93	106.17	4.37	44,603	3.36	
2012	62.77	1.06	76.51	-1.82	47.02	3.02	87.74	1.35	88.69	-0.29	108.09	1.81	45,318	1.60	
2013	65.39	4.17	76.98	0.61	51.39	9.29	89.77	2.31	86.00	-3.03	105.54	-2.36	45,685	0.81	
2014	70.63	8.01	83.00	7.82	58.25	13.35	91.74	2.19	85.54	-0.53	103.84	-1.61	47,455	3.87	
2015	69.88	-1.06	81.43	-1.89	57.10	-1.97	93.38	1.79	84.65	-1.04	110.73	6.64	49,374	4.04	
2016	71.88	2.86	81.86	0.53	59.78	4.69	93.94	0.60	87.43	3.28	109.53	-1.08	49,969	1.21	
2017	75.67	5.27	86.02	5.08	64.19	7.38	94.75	0.86	90.41	3.41	109.75	0.20	51,853	3.77	
2018	78.35	3.54	89.16	3.65	67.07	4.49	96.80	2.16	91.84	1.58	113.32	3.25	54,567	5.23	
2019	79.16	1.03	85.31	-4.32	70.05	4.44	95.64	-1.20	92.99	1.25	115.55	1.97	55,816	2.29	
2020	86.52	9.30	85.84	0.62	83.55	19.27	93.94	-1.78	93.67	0.73	106.96	-7.43	56,538	1.29	
2021	100.00	15.58	100.00	16.50	100.00	19.69	100.00	6.45	100.00	6.76	100.00	-6.51	60,545	7.09	
2022	98.04	-1.96	93.85	-6.15	101.52	1.52	93.12	-6.88	95.15	-4.85	107.20	7.20	63,324	4.59	
2023	85.49	-12.80	84.27	-10.21	85.66	-15.62	85.30	-8.40	88.81	-6.66	120.02	11.96	62,492	-1.31	
2024	95.97	12.26	85.12	1.01	103.50	20.83	85.58	0.33	90.56	1.97	111.42	-7.17	65,622	5.01	
2022	7	99.68	-2.56	95.23	-8.78	103.02	2.42	94.51	-9.86	98.56	-4.73	123.80	13.14	73,933	9.38
	8	101.38	-2.16	93.45	-8.26	107.37	2.78	90.59	-12.30	101.86	-1.36	107.90	9.99	65,569	6.87
	9	95.33	-9.08	89.78	-10.46	100.33	-8.00	86.82	-12.48	92.43	-7.37	100.93	9.47	57,780	-0.98
	10	93.90	-8.42	89.10	-11.45	98.05	-6.15	87.10	-11.56	91.50	-10.04	97.52	7.51	55,022	-1.97
	11	94.38	-9.81	91.23	-11.29	98.27	-7.95	83.51	-16.81	96.29	-6.64	103.76	17.68	58,902	5.76
	12	93.86	-12.32	91.75	-14.34	95.67	-11.62	87.54	-14.78	98.35	-7.59	108.78	19.08	61,515	4.14
2023	1	78.55	-24.47	71.48	-26.84	82.43	-23.30	76.52	-24.71	75.66	-25.72	232.77	31.49	110,733	-0.46
	2	78.89	-10.34	81.74	1.36	76.88	-17.79	82.19	-3.99	80.48	5.67	120.54	17.06	57,644	5.06
	3	88.81	-16.57	95.59	-11.05	84.31	-22.20	92.06	-6.43	96.61	-8.74	97.23	19.18	52,409	-0.19
	4	75.91	-23.31	81.86	-14.89	71.60	-29.44	81.12	-17.39	81.38	-11.53	113.23	25.97	52,257	-2.96
	5	84.05	-16.40	88.58	-9.00	79.68	-21.87	89.77	-13.71	92.77	-1.07	113.15	16.83	57,768	-1.78
	6	82.26	-17.73	83.50	-13.32	80.08	-22.03	85.96	-13.63	88.34	-5.17	112.34	21.13	56,214	0.62
	7	84.03	-15.70	83.62	-12.19	82.43	-19.99	86.88	-8.07	91.78	-6.88	139.68	12.83	71,474	-3.33
	8	90.02	-11.21	85.85	-8.13	90.60	-15.62	90.44	-0.17	97.21	-4.57	111.93	3.73	61,620	-6.02
	9	88.63	-7.03	83.58	-6.91	92.15	-8.15	85.02	-2.07	85.50	-7.50	106.87	5.89	57,876	0.17
	10	91.86	-2.17	81.73	-8.27	98.41	0.37	85.10	-2.30	87.01	-4.91	96.15	-1.40	54,012	-1.84
	11	92.64	-1.84	85.63	-6.14	96.96	-1.33	86.04	3.03	93.94	-2.44	100.03	-3.59	56,740	-3.67
	12	90.25	-3.85	88.13	-3.95	92.34	-3.48	82.55	-5.70	95.09	-3.31	110.40	1.49	60,869	-1.05
2024	1	91.56	16.56	88.33	23.57	93.07	12.91	87.71	14.62	96.34	27.33	152.66	-34.42	85,430	-22.85
	2	77.98	-1.15	67.13	-17.87	84.26	9.60	74.81	-8.98	70.32	-12.62	182.50	51.40	87,297	51.44
	3	93.18	4.92	88.55	-7.36	96.69	14.68	87.50	-4.95	91.45	-5.34	93.54	-3.80	53,511	2.10
	4	87.62	15.43	83.95	2.55	89.93	25.60	84.97	4.75	86.89	6.77	101.06	-10.75	54,422	4.14
	5	97.91	16.49	90.00	1.60	102.92	29.17	92.44	2.97	94.47	1.83	99.82	-11.78	59,996	3.86
	6	93.40	13.54	84.39	1.07	99.89	24.74	84.70	-1.47	87.77	-0.65	100.78	-10.29	57,870	2.95
	7	95.54	13.70	85.10	1.77	101.59	23.24	89.24	2.72	92.72	1.02	131.19	-6.08	76,856	7.53
	8	102.37	13.72	86.73	1.03	112.44	24.11	88.15	-2.53	97.75	0.56	107.32	-4.12	67,378	9.34
	9	99.67	12.46	82.25	-1.59	112.20	21.76	81.70	-3.90	89.20	4.33	99.35	-7.04	60,754	4.97
	10	100.56	9.47	83.18	1.77	113.20	15.03	82.77	-2.74	89.05	2.34	90.96	-5.40	56,225	4.10
	11	102.97	11.15	88.54	3.40	114.36	17.95	84.50	-1.79	93.15	-0.84	99.58	-0.45	62,980	11.00
	12	108.91	20.68	93.25	5.81	121.47	31.55	88.44	7.14	97.56	2.60	96.70	-12.41	64,609	6.14
2025	1	96.40	5.29	78.14	-11.54	108.44	16.51	81.10	-7.54	87.12	-9.57	204.74	34.12	121,262	41.94

資料來源：經濟部統計處，「114年1月工業生產統計」；行政院主計總處，「114年1月薪資與生產力統計結果」。

註：1-當月單位產出勞動成本及平均薪資係按當年度各月薪資，以受僱員工人數加權平均編算。

Source：Department of Statistics, MOEA, "Industrial Production Indexes in January 2025"; DGBAS, "Earnings and Productivity Statistics in January 2025".