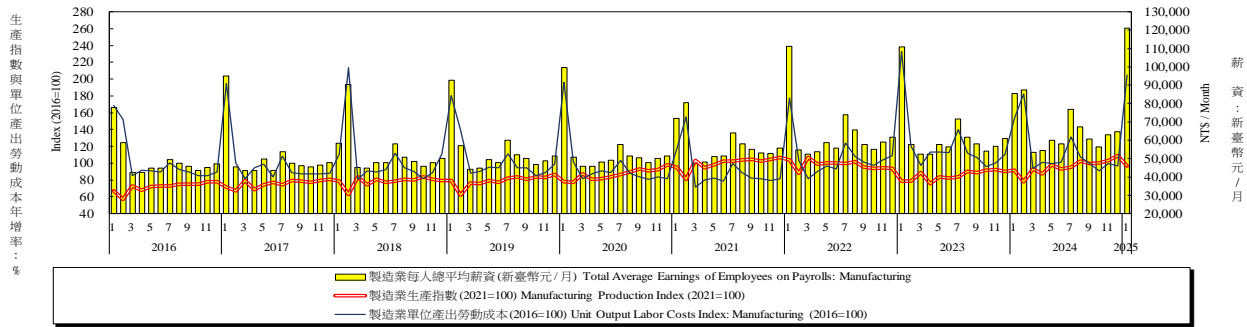


## 二、生產概況 最新更新日期：2025年2月25日

2024年1月工業生產指數96.31，受農曆春節假期影響，較上月減少11.14%，其中製造業減少11.49%；經季節調整後，工業生產減少3.66%，製造業減少4.46%。與上年同月比較，工業生產增加5.07%，其中製造業增加5.29%，礦業及土石採取業減少14.22%，電力及燃氣供應業增加1.22%，用水供應業減少0.58%。

表三：生產概況  
Table 3. Industry Indicators



年與月 Year & Month	製造業生產 (2021年=100) Manufacturing Production Index (2021=100)		金屬機電工業 (2021年=100) Metal Electromechanical Industry (2021=100)		資訊電子工業 (2021年=100) Information electronics industry (2021=100)		化學工業 (2021年=100) Chemical industry (2021=100)		民生工業 (2021年=100) Livelihood Industry (2021=100)		製造業單位產出勞動成本 (2021年=100) Unit Output Labor Costs Index: Manufacturing (2021=100)		製造業每人總平均薪資 (新臺幣 / 月) Total Average Earnings of Employees on Payrolls: Manufacturing		
	指數 Index	年增率 Annual Growth Rate (%)	指數 Index	年增率 Annual Growth Rate (%)	指數 Index	年增率 Annual Growth Rate (%)	指數 Index	年增率 Annual Growth Rate (%)	指數 Index	年增率 Annual Growth Rate (%)	指數 Index	年增率 Annual Growth Rate (%)	新臺幣元 NT\$ / Month	年增率 Annual Growth Rate (%)	
2010	60.62	29.17	73.77	30.89	43.94	40.92	90.52	9.43	86.42	15.44	101.72	-12.18	43,152	9.18	
2011	62.11	2.46	77.93	5.64	45.64	3.87	86.57	-4.36	88.95	2.93	106.17	4.37	44,603	3.36	
2012	62.77	1.06	76.51	-1.82	47.02	3.02	87.74	1.35	88.69	-0.29	108.09	1.81	45,318	1.60	
2013	65.39	4.17	76.98	0.61	51.39	9.29	89.77	2.31	86.00	-3.03	105.54	-2.36	45,685	0.81	
2014	70.63	8.01	83.00	7.82	58.25	13.35	91.74	2.19	85.54	-0.53	103.84	-1.61	47,455	3.87	
2015	69.88	-1.06	81.43	-1.89	57.10	-1.97	93.38	1.79	84.65	-1.04	110.73	6.64	49,374	4.04	
2016	71.88	2.86	81.86	0.53	59.78	4.69	93.94	0.60	87.43	3.28	109.53	-1.08	49,969	1.21	
2017	75.67	5.27	86.02	5.08	64.19	7.38	94.75	0.86	90.41	3.41	109.75	0.20	51,853	3.77	
2018	78.35	3.54	89.16	3.65	67.07	4.49	96.80	2.16	91.84	1.58	113.32	3.25	54,567	5.23	
2019	79.16	1.03	85.31	-4.32	70.05	4.44	95.64	-1.20	92.99	1.25	115.55	1.97	55,816	2.29	
2020	86.52	9.30	85.84	0.62	83.55	19.27	93.94	-1.78	93.67	0.73	106.96	-7.43	56,538	1.29	
2021	100.00	15.58	100.00	16.50	100.00	19.69	100.00	6.45	100.00	6.76	100.00	-6.51	60,545	7.09	
2022	98.04	-1.96	93.85	-6.15	101.52	1.52	93.12	-6.88	95.15	-4.85	107.20	7.20	63,324	4.59	
2023	85.49	-12.80	84.27	-10.21	85.66	-15.62	85.30	-8.40	88.81	-6.66	120.02	11.96	62,492	-1.31	
2024	95.97	12.26	85.12	1.01	103.50	20.83	85.58	0.33	90.56	1.97	111.42	-7.17	65,622	5.01	
2022	7	99.68	-2.56	95.23	-8.78	103.02	2.42	94.51	-9.86	98.56	-4.73	123.80	13.14	73,933	9.38
2022	8	101.38	-2.16	93.45	-8.26	107.37	2.78	90.59	-12.30	101.86	-1.36	107.90	9.99	65,569	6.87
2022	9	95.33	-9.08	89.78	-10.46	100.33	-8.00	86.82	-12.48	92.43	-7.37	100.93	9.47	57,780	-0.98
2022	10	93.90	-8.42	89.10	-11.45	98.05	-6.15	87.10	-11.56	91.50	-10.04	97.52	7.51	55,022	-1.97
2022	11	94.38	-9.81	91.23	-11.29	98.27	-7.95	83.51	-16.81	96.29	-6.64	103.76	17.68	58,902	5.76
2022	12	93.86	-12.32	91.75	-14.34	95.67	-11.62	87.54	-14.78	98.35	-7.59	108.78	19.08	61,515	4.14
2023	1	78.55	-24.47	71.48	-26.84	82.43	-23.30	76.52	-24.71	75.66	-25.72	232.77	31.49	110,733	-0.46
2023	2	78.89	-10.34	81.74	1.36	76.88	-17.79	82.19	-3.99	80.48	5.67	120.54	17.06	57,644	5.06
2023	3	88.81	-16.57	95.59	-11.05	84.31	-22.20	92.06	-6.43	96.61	-8.74	97.23	19.18	52,409	-0.19
2023	4	75.91	-23.31	81.86	-14.89	71.60	-29.44	81.12	-17.39	81.38	-11.53	113.23	25.97	52,257	-2.96
2023	5	84.05	-16.40	88.58	-9.00	79.68	-21.87	89.77	-13.71	92.77	-1.07	113.15	16.83	57,768	-1.78
2023	6	82.26	-17.73	83.50	-13.32	80.08	-22.03	85.96	-13.63	88.34	-5.17	112.34	21.13	56,214	0.62
2023	7	84.03	-15.70	83.62	-12.19	82.43	-19.99	86.88	-8.07	91.78	-6.88	139.68	12.83	71,474	-3.33
2023	8	90.02	-11.21	85.85	-8.13	90.60	-15.62	90.44	-0.17	97.21	-4.57	111.93	3.73	61,620	-6.02
2023	9	88.63	-7.03	83.58	-6.91	92.15	-8.15	85.02	-2.07	85.50	-7.50	106.87	5.89	57,876	0.17
2023	10	91.86	-2.17	81.73	-8.27	98.41	0.37	85.10	-2.30	87.01	-4.91	96.15	-1.40	54,012	-1.84
2023	11	92.64	-1.84	85.63	-6.14	96.96	-1.33	86.04	3.03	93.94	-2.44	100.03	-3.59	56,740	-3.67
2023	12	90.25	-3.85	88.13	-3.95	92.34	-3.48	82.55	-5.70	95.09	-3.31	110.40	1.49	60,869	-1.05
2024	1	91.56	16.56	88.33	23.57	93.07	12.91	87.71	14.62	96.34	27.33	152.66	-34.42	85,430	-22.85
2024	2	77.98	-1.15	67.13	-17.87	84.26	9.60	74.81	-8.98	70.32	-12.62	182.50	51.40	87,297	51.44
2024	3	93.18	4.92	88.55	-7.36	96.69	14.68	87.50	-4.95	91.45	-5.34	93.54	-3.80	53,511	2.10
2024	4	87.62	15.43	83.95	2.55	89.93	25.60	84.97	4.75	86.89	6.77	101.06	-10.75	54,422	4.14
2024	5	97.91	16.49	90.00	1.60	102.92	29.17	92.44	2.97	94.47	1.83	99.82	-11.78	59,996	3.86
2024	6	93.40	13.54	84.39	1.07	99.89	24.74	84.70	-1.47	87.77	-0.65	100.78	-10.29	57,870	2.95
2024	7	95.54	13.70	85.10	1.77	101.59	23.24	89.24	2.72	92.72	1.02	131.19	-6.08	76,856	7.53
2024	8	102.37	13.72	86.73	1.03	112.44	24.11	88.15	-2.53	97.75	0.56	107.32	-4.12	67,378	9.34
2024	9	99.67	12.46	82.25	-1.59	112.20	21.76	81.70	-3.90	89.20	4.33	99.35	-7.04	60,754	4.97
2024	10	100.56	9.47	83.18	1.77	113.20	15.03	82.77	-2.74	89.05	2.34	90.96	-5.40	56,225	4.10
2024	11	102.97	11.15	88.54	3.40	114.36	17.95	84.50	-1.79	93.15	-0.84	99.58	-0.45	62,980	11.00
2024	12	108.91	20.68	93.25	5.81	121.47	31.55	88.44	7.14	97.56	2.60	96.70	-12.41	64,609	6.14
2025	1	96.40	5.29	78.14	-11.54	108.44	16.51	81.10	-7.54	87.12	-9.57	204.74	34.12	121,262	41.94

資料來源：經濟部統計處，「114年1月工業生產統計」；行政院主計總處，「114年1月薪資與生產力統計結果」。

註：1-當月單位產出勞動成本及平均薪資係按當年度各月薪資，以受僱工人數加權平均編算。

Source：Department of Statistics, MOEA, "Industrial Production Indexes in January 2025"; DGBAS, "Earnings and Productivity Statistics in January 2025".